

# FLUID LINE TECHNOLOGY

MANUFACTURER OF SANITARY  
AND ULTRACLEAN COMPONENTS

## SINGLE USE TECHNOLOGY

PRODUCT CATALOG



CUSTOM

STANDARD

PROTOTYPE

## MANUFACTURER OF SANITARY AND ULTRACLEAN COMPONENTS

---

Since 1989, Fluid Line Technology has been the answer to the need for manufacturing quality crafted stainless steel custom fabrications and standard sanitary components for the Bio-Technology, Bio-Pharmaceutical, Food, Dairy, Beverage and Semi-Conductor marketplace.

Fluid Line Technology has produced a wide variety of custom fabrications to compliment our line of standard products. Over the years, our standard product lines have developed in conjunction with our Customers' needs and concerns. We have taken great pride in developing these products and look forward to the opportunities to learn from and serve new and existing Customers.

We have always maintained the attitude of, "if you can dream it up, we can build it!" As you look through our catalog you will see many examples of custom fabricated items that look as if they are right off the shelf or from a catalog. This is the direct result of a staff of employees who are passionate about stainless steel custom fabrications! We feel so strongly about this, we go the extra mile to procure our own materials, mainly 316L, low ferrite and low sulfur content to ensure the highest quality.

Along with our state-of-the-art TIG, Orbital, and Hand welding department, we house a fully tooled and creative machining and cutting department to meet most any custom fabrication needs. Our ID and OD polishing professionals can polish any of your fabrications to meet or exceed any surface finish you may require.

Our onsite washing and electro-polishing department is staffed with highly trained professionals. We also have an onsite inspection department and we maintain being BPE and ISO compliant.

Fluid Line is located in Southern California. Our facility is very near to our local suppliers and vendors in order to keep our costs to a minimum. We pride ourselves on being an efficient manufacturing facility with a professionally designed floor plan for optimal work flow.

Other services we provide are, manufacturing for OEM'S, engineering services, skid & filtration assembly, product development, onsite tube bending, onsite abrasive flow polishing, onsite citric passivation, and local nitric passivation to your required specifications.

## MANUFACTURING CAPABILITIES

---

### □ SINGLE USE TECHNOLOGY

Fully customizable SUT Solutions  
Projects from Idea to Engineering  
to Application

### □ METAL FORMING

Tube Bending up to 2" diameter  
Tee Porting Branches and Multi- Outlet  
manifolds up to 6" diameter

### □ MATERIALS

316 L  
Alloy 22 & 276  
Performance Plastics  
Consult Factory for other  
exotic materials

### □ CHEMICAL TREATMENT

Electro Polishing  
Passivation Citric / Nitric

### □ WELDING

From 1/8" diameter through  
12" diameter  
Manual weld  
Semi Automatic weld  
Orbital weld  
Weld documentation logs upon request

### □ POLISHING

From 1/4" diameter through 12" diameter  
Mechanical Polishing from mill  
finish to 5Ra  
Abrasive Flow Polishing service available

### □ MACHINING

Manual Lathe & Mill  
CNC Lathe & Mill

### □ ADDITIONAL SERVICES

Helium Leak Test  
Third Party Inspection  
Hydrostatic Test  
Bore Scope Inspection

# INTRODUCING OUR

## SINGLE-USE/ LIMITED USE SAMPLING VALVE



Each design is made from only certified USP CLASS IV materials with steam sterilization capabilities of 121°C for 30 minutes.

Each *Disposable Sampling Valve* comes in a sealed pouch ready to Sanitize or Gamma sterilize pouch as an available option.

## FEATURES AND BENEFITS

- ❑ 3 cleaning cycles
- ❑ 12 cleaning cycles
- ❑ Fully Autoclavable
- ❑ USP CLASS VI Materials
- ❑ Ready-To-Sanitize Option
- ❑ Gamma Irradiation Option
- ❑ Easy-to use Twist Handle\*
- ❑ TFM™ Tip (Seat)
- ❑ Self Aligning & Non-Rotating Stem
- ❑ Zero Dead Leg for all Sizes/Connections\*\*
- ❑ No tools required to operate

\*Easy-Twist Handle refers to no tools required to operate.

\*\*The internal dead volumes is minimized to its fluid surface tension. This is not always true for our competitors.

TFM™ IS REGISTERED BY DYNEON, INC.

SINGLE-USE	LIMITED-USE
●	
	●
●	●
●	●
●	●
●	●
●	●
●	●
●	●
●	●
●	●
●	●

Fluidline Technology is proud to introduce our new Single Use Technology line of *Quick Locking Fittings*.

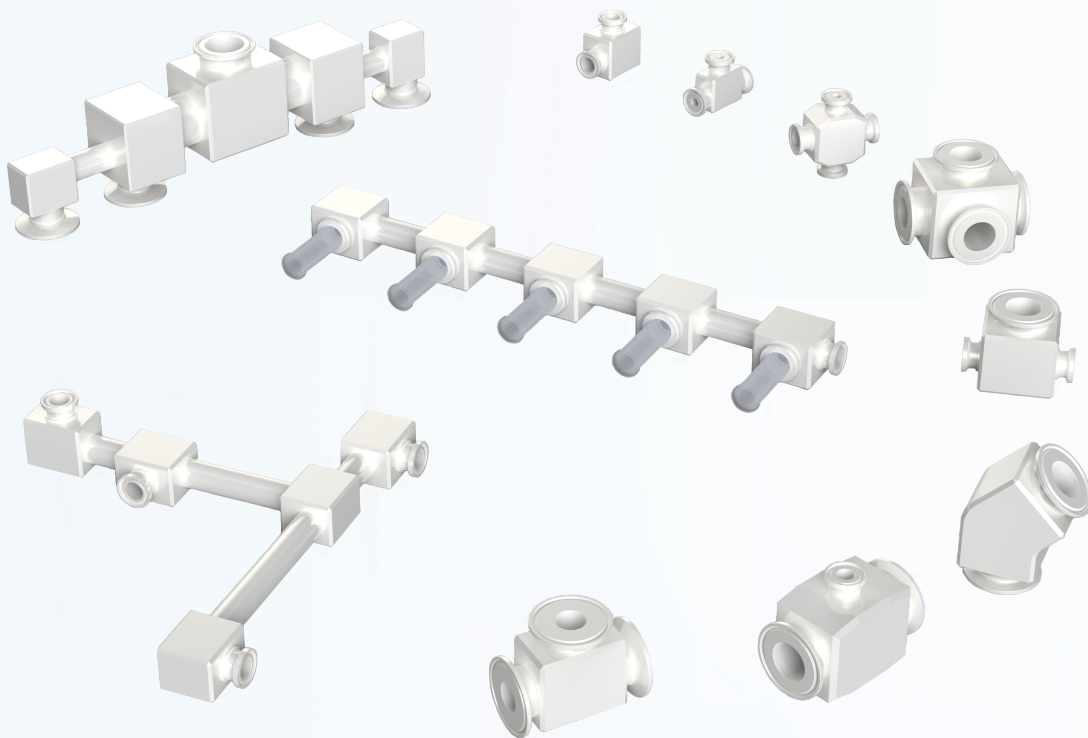
# QUICK LOCKING SYSTEM

These fittings are crafted in solid thermoplastic piping material with sanitary flanges to approach the combined strength, working temperature, and chemical resistance for simple and clean fluid management solutions in a single use system. Its compact design allows Fluid Line to build lightweight piping and instrumentation systems with minimal space requirements.

Components are manufactured from certified USP Class IV materials.

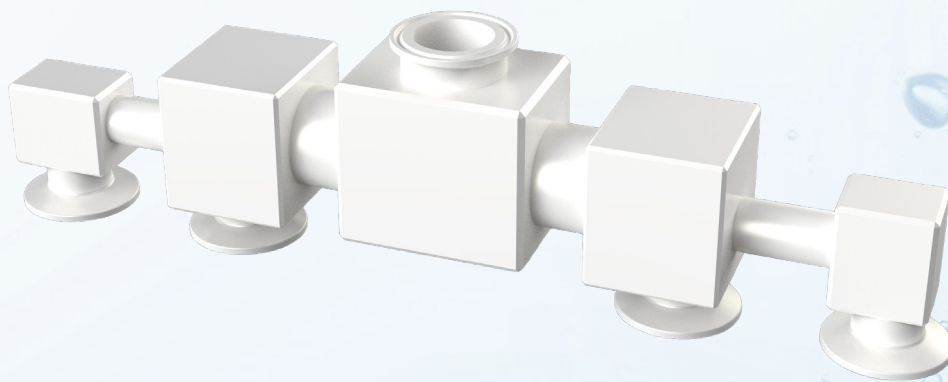
*Quick Locking Fittings* are available in various port configurations like elbows, tees, reducers, crosses, etc., in sizes from 0.25" to 1.50".

*Patent Pending*

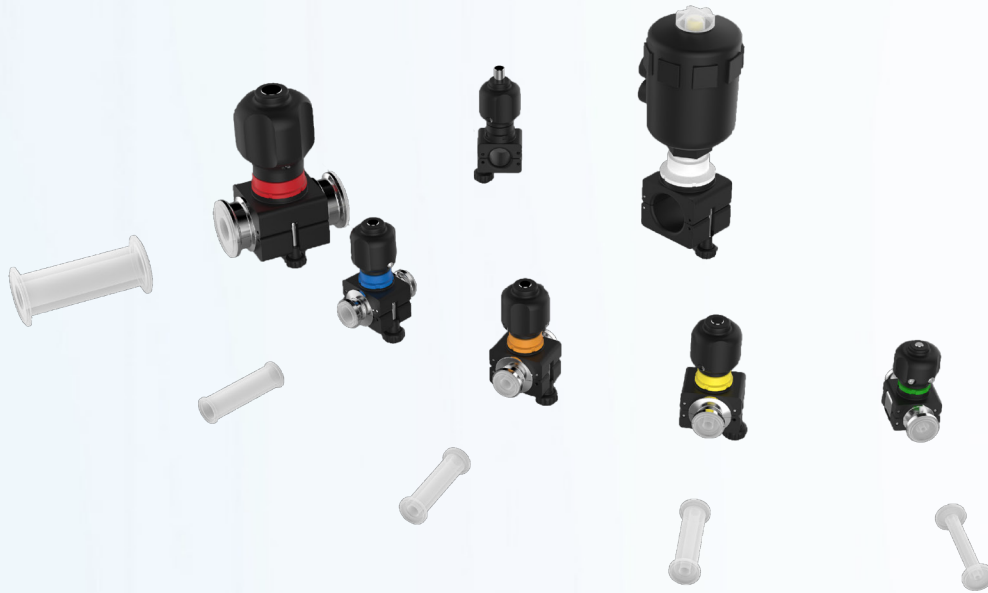


# FEATURES AND BENEFITS

High-pressure  
High-temperature durable construction  
USP Class IV certified material  
Fully autoclavable  
Gamma stable  
Smooth internal surface  
Various sizes available  
Various configurations available  
Good for all cGMP manufacturing  
Quick assembly, no hose barbs/wraps  
Uses: CIP system  
Uses: TFF system  
Uses: Chromatography system  
Lightweight and user friendly  
No substructure required  
Fully customizable



## 2 WAY PINCH VALVES



Components are made only from certified USP Class IV materials.

### FEATURES AND BENEFITS

- ❑ High-temperature durable construction
- ❑ All materials are USP Class VI certified
- ❑ Handles available in several colors
- ❑ Sealed assembly fully autoclavable
- ❑ Manual or air actuated configurations
- ❑ Submersible manual option
- ❑ Interchangeable manual or air actuated valve bodies
- ❑ Six standard hose sizes readily available
- ❑ Adjustable flow control
- ❑ Self-aligning & non-rotating stem
- ❑ Easy-to-use twist handle
- ❑ Open-indicating stem
- ❑ No tools needed to operate
- ❑ Available in all stainless steel
- ❑ Air actuators & controls switches available
- ❑ Special hose sizes available

*Registered patent of Exigo and Parker Hannifin*

*For more information or a quote, please contact your local sales representative or email us at [sales@fluidlinetech.com](mailto:sales@fluidlinetech.com)*

# PINCH VALVE STANDARD SIZES

Fluid Line Technology is proud to introduce our new line of pinch valves. We offer three product lines to suit your needs: Pinch Valve, I.D. Element and O.D. Element Pinch Valve.

**Pinch valves**, engineered to work with standard silicone tube sizes.

Pinch Valve							
VALVE SIZE		1/8"	3/16"	3/8"	1/2"	3/4"	1"
TUBE SIZE	I.D.	1/8"	3/16"	3/8"	1/2"	3/4"	1"
	O.D.	1/4"	3/8"	5/8"	3/4"	1"	1.375"

I.D. Element Pinch Valves offer sanitary clamp ends. This valve features a replaceable *Silicone Element* to match the dimensions of standard silicone tube applications.

I.D. Element Pinch Valve							
VALVE SIZE		1/8"	3/16"	3/8"	1/2"	3/4"	1"
TC END SIZE		FRACTIONAL TC					1"/1.5" TC
SILICONE TUBE I.D.		1/8"	3/16"	3/8"	1/2"	3/4"	1"

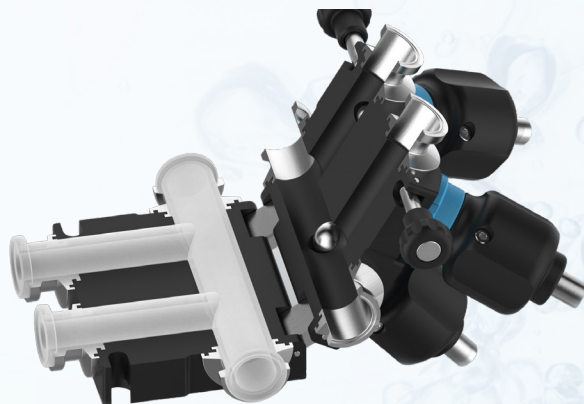
O.D. Element Pinch Valves offer sanitary clamp ends. This valve group features a replaceable *Silicone Element* to match the dimensional standards of stainless steel tube applications, which enables seamless diaphragm valve replacement under ASME BPE standards.

O.D. Element Pinch Valves							
VALVE SIZE		1/4"	3/8"	1/2"	3/4"	1"	1"
TC END SIZE		FRACTIONAL TC					1"/1.5" TC
S.S. TUBE I.D.		.180"	.305"	.375"	.620"	.870"	1.370"

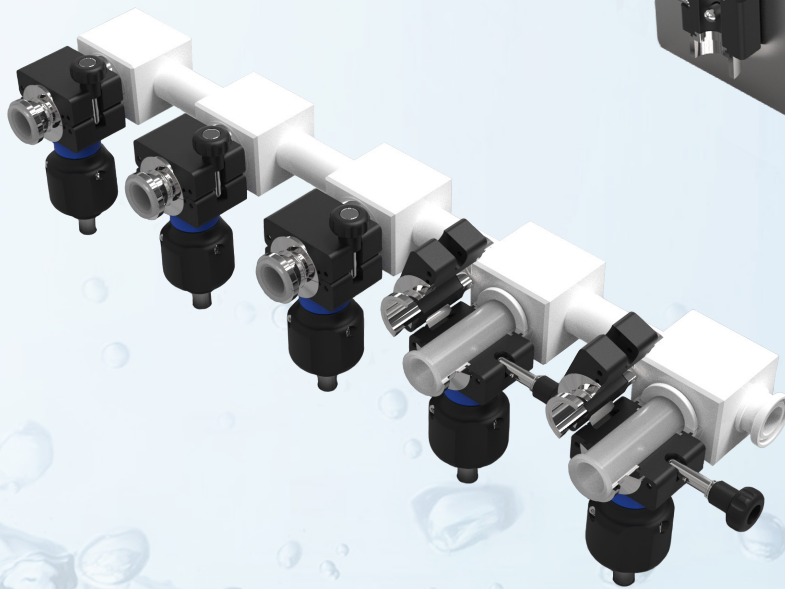
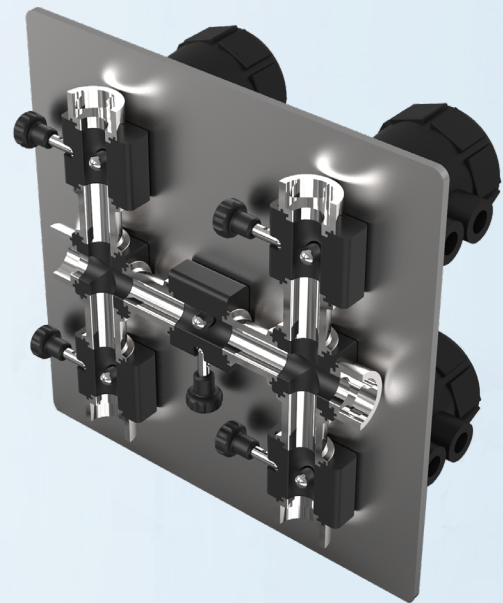
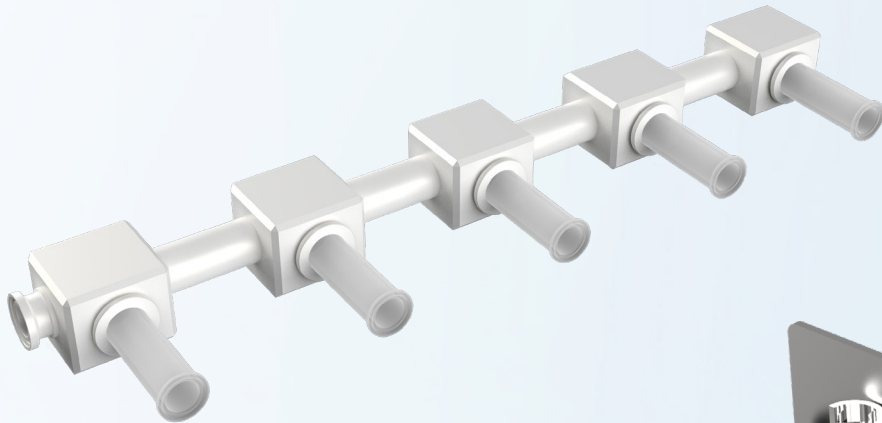
## 3 WAY PINCH VALVES



## 4 WAY PINCH VALVES



# CUSTOM SINGLE USE TECHNOLOGY SOLUTIONS



9362 ETON AVENUE, CHATSWORTH, CA 91311

TEL 818.998.8848 FAX 818.998.6331

EMAIL [INFO@FLUIDLINETECH.COM](mailto:INFO@FLUIDLINETECH.COM)

[WWW.FLUIDLINETECH.COM](http://WWW.FLUIDLINETECH.COM)



[WWW.FLUIDLINETECH.COM](http://WWW.FLUIDLINETECH.COM)